

Telescopic Handlers

TL 432-7
Litronic®

TL 436-7
Litronic®

TL 441-7
Litronic®

Lift Height:
7.0 m / 23' ft in

Lift Capacity:
3.2 – 4.1 t



LIEBHERR

TL 432-7

Lift Height:

7.0 m / 23' ft in

Lift Capacity:

3.2 t

Engine power:

74 kW/100 HP

Hydrostatic travel drive

with electronic control

TL 436-7

Lift Height:

7.0 m / 23' ft in

Lift Capacity:

3.6 t

Engine power:

74 kW/100 HP

Hydrostatic travel drive

with electronic control

TL 441-7

Lift Height:

7.0 m / 23' ft in

Lift Capacity:

4.1 t

Engine power:

74 kW/100 HP

Hydrostatic travel drive

with electronic control

Performance

Infinitely variable travel drive
and maximum manoeuvrability



Efficiency

Low consumption
and low costs

Reliability

Meeting daily
requirements

Comfort

Ease of operation
and optimum overview

Maintenance friendly design

Simple maintenance
and repairs



Performance



Infinitely variable travel drive and maximum manoeuvrability

The tried-and-tested hydrostatic travel drive with infinitely variable acceleration without shifting gear and good manoeuvrability guarantees quick work processes even in limited spaces. The construction machine can be used universally and is solid from the ground up. It is designed for maximum performance in various applications. High load capacities, intuitive operation and high performance components allow the driver to complete his work quickly and reliably.

High load capacities

Excellent weight distribution

The newly designed frame and balanced wheelbase ensure a low centre of gravity. As a result, Liebherr's telescopic handler performs with impressive stability when loading and stacking.

Optimised boom design

The robust telescopic boom is mounted low on the frame. Strong slide bearings allow for perfect guidance even with heavy loads. The hoist and telescopic cylinders feature end position damping to protect the driver and the machine when moving heavy loads.

Intelligent interaction

Performance counts

The optimised hydraulic system combined with the travel drive and diesel engine guarantees precise working cycles and short cycle times.

Modern diesel engine

The high-torque power pack with common-rail injection system ensures a high level of reliability and excellent power delivery in the most demanding situations.

Liebherr travel drive

The infinitely variable hydrostatic travel drive and the many years of Liebherr know-how guarantee excellent driving performance.

Compact and optimised cooling

Simple selection of steering modes

All steering modes can be conveniently selected using an operating lever: Front-wheel steering, four-wheel steering and crab steering. An LED informs the driver of the neutral position of the wheels.

Cooling guaranteed

The sophisticated air flow combined with the intake fan and the large cooler pack keeps the machine at an optimum operating temperature even on hot days. A reversible fan removes impurities from the air intake surfaces.



High load capacities

- The Liebherr telescopic handler has a high load capacity at the maximum reach and lifting height.
- The optimised kinematics ensure maximum manoeuvrability when using the fork and bucket functions.

Superior drive system

- Benefits of the hydrostatic drive at a glance: no brake wear, low fuel consumption, rapid, precise and secure manoeuvring.
- The speed can be infinitely varied for driving without shifting gear, and absolutely no jolts.

Compact and manoeuvrable

- With four-wheel steering, the telescopic handler can manoeuvre around any corner.
- The continual limited-slip differential of 45% allows work on even the most difficult terrain.

Efficiency



Low consumption and low costs

The Liebherr telescopic handlers are all-rounders that make a decisive contribution to the efficiency of your vehicle fleet. Many different optional attachments allow universal use and increased utilisation of the machines. Top performance, low fuel consumption and minimum maintenance guarantee economy throughout the service life of the machine.

An all-rounder

An impressive variety of attachments

The wide range of attachments make the Liebherr telescopic handler an all-rounder. Whether a simple fork, one of the many buckets or a brush - every task is mastered.

Versatile and flexible

Numerous options for a wide variety of applications are available. This allows the machine to be perfectly matched to the customer's requirements.

Universal use

The oscillating rear axle can be reliably and effortlessly driven on any terrain.

Low operating costs

Low fuel consumption

The Liebherr drive concept is designed for high performance. The intelligent electronic controller of the hydrostatic travel drive guarantees maximum tractive force in every work situation. The interaction of the tried-and-tested drive components with the diesel engine and the hydraulic system reduces the fuel consumption at maximum performance.

Intelligent cooling

The fan speed is electronically regulated and hydrostatically controlled depending on the temperature of the surroundings, hydraulic oil and engine. The cooler pack is easily accessible and easy to clean.

Easy maintenance

Maximum accessibility to all maintenance points. Long maintenance intervals keep expenditure low and reduce daily work to a minimum. Options such as the central lubrication system contribute to the further reduction of repair times and increased availability of the machine.



Flexible and versatile

If the telescopic handler is fitted with a hydraulic quick-release coupling, the attachments can be changed at the touch of a button.

Easy maintenance

All control and maintenance points in the engine compartment are easily accessible due to the engine being installed transverse to the direction of travel.

After-treatment exhaust gas

Exhaust gas legislation is complied with using a maintenance-free diesel oxidation catalytic converter. A diesel particle filter is available as an option.

Reliability



Meeting daily requirements

Robust and reliable: as characterised by Liebherr telescopic handlers. Advanced technology with high-quality materials and build quality guarantee maximum availability. A high level of utilisation and value is guaranteed in the long term.

Quality right down to the last detail

Tried-and-tested components

Only components that have been tested under the most punishing conditions are used in Liebherr telescopic handlers.

Robust and well-thought-out design

With the robust quick-release coupling - suitable for Manitou tools - all tools are ideally and reliably fitted. Attachments with a hydraulic function can be conveniently operated with a joystick via the double-acting hydraulic circuit-1 (installed as standard). A double-acting hydraulic circuit-2 or a leakage oil line can be also be installed as an option.

Pressure release for hydraulic circuit-1

The clutches must not have pressure applied to enable the attachments to be changed quickly and easily. Pressure release is available as an option and prevents unnecessary loss of oil or broken seals in the clutches.

Coherent safety control

Intelligent overload warning system

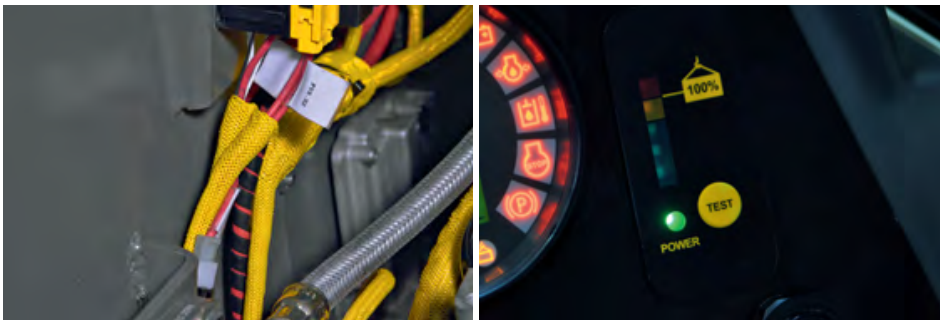
A warning system constantly informs the driver of the load status of the machine. In stacking mode, boom movements are slowed down or even stopped if there is any danger of the machine tipping forward.

To enable efficient filling of the bucket, stockpiling mode can be selected. In this setting, boom movements are not limited even if overload is detected, as long as the machine keeps moving forward.

In addition, the driver can temporarily de-activate the overload warning system.

Fuel tank

Long working and application times are guaranteed with a holding capacity of 120 l/26.4 Imp.gal. The tank is protected with installation under the cab and provides optimum protection from damage.



Cable protection

- The tried-and-tested protective braiding prevents wear and mechanical damage to the electrical system.
- In addition, condensation is inhibited to eliminate any risk of short circuiting.

Reliable safety systems

An audible and visible overload warning system provides early warning of dangerous situations while stacking or stockpiling.

Overload warning system

For stacking, loading or lifting, the right setting can be selected according to requirements, ensuring safety and high-performance operation in compliance with EN 15000 - regardless of the situation.

Comfort



Ease of operation and optimum overview

The cab of the telescopic handler from Liebherr is an ideal workplace. It provides an excellent all-around view, has a spacious interior, provides a safe working environment, and its ergonomic controls allow relaxed and productive operation

Unhindered view

Low pivot point

During development, ensuring good visibility was of paramount importance. For this reason, the pivot point of the arm has been placed as low as possible so that the driver has a clear view both to the rear and to the right.

Safety coupled with large windows

The soundproof ROPS/FOPS cab ensures a safe and pleasant working environment. Thanks to the extensive glazing and the deep windscreen, the driver always has a safe view of the attachment and the surroundings.

Effortless operation

One-hand operation

All the functions of the boom are conveniently controlled with the right hand using a joystick. Even forward and reverse direction can be selected on the joystick. This means the driver can always keep one hand on the steering wheel and the other on the joystick. This easy and ergonomic operation provides comfort and safety for long working days.

Combined inch-brake pedal

The speed is reduced by pressing the inch-brake pedal. Pressing further down activates the brake function. The operator controls the engine and working speeds with his right foot using the accelerator pedal.

Safe position

Parking brake

The parking brake is electronically activated automatically when the machine stops and prevents it from rolling away. A seat contact switch automatically detects that the parking brake must remain activated when the driver exits the telescopic handler. To release the parking brake, move to the neutral position using the travel direction switch. This saves the driver reaching into the cab unnecessarily. The parking brake can also be engaged using a switch next to the joystick on the right.



Seat comfort and ergonomics

- The driver's seat has spring suspension and can be individually adjusted for different drivers.
- The steering column swivels to the appropriate position using foot activation as standard. The height can also be adjusted as an option.

Optimum visibility in all directions

- The innovative protective design of the roof window provides a perfect view of the load while also protecting the driver.
- The displays are optimally located at the front right in the driver's field of vision.

Perfect rear view

- The pivot point of the boom is positioned extremely low in order to guarantee the best visibility.
- The driver has an excellent view of the most critical areas behind and to the right of the cab.

Maintenance-friendly design



Simple maintenance and repairs

At Liebherr, superior service is more than a promise, it is a guarantee to every customer. Several production facilities and an extensive service network for construction equipment means close proximity, efficient structures, and fast service reaction times.

High-performance service

Solid basis

When you buy a Liebherr telescopic handler, you enter a solid, long-term partnership. Our production facilities and service partners guarantee it.

Extensive service network

An extensive worldwide service network and service stations with the latest equipment guarantee rapid support whenever required. 98 % of all spare parts are kept in stock and can be dispatched from our modern distribution centre at very short notice.

Latest equipment

Our customer service technicians have all the necessary diagnostic equipment and tools.

Knowledge ensures value

Experience and training

Comprehensive know-how ensures first-class and effective service and maintenance. This contributes significantly to availability and cost effectiveness. Liebherr customer service technicians receive intensive training and continuing education at the production plants. Their comprehensive knowledge provides you with fast, reliable service.

Continuous dialogue with users

We utilise the expert knowledge and practical experience of our customers to consistently optimise our machines and services – real solutions for real situations.

Competent advice and service

Experienced specialists provide decision making support for your specific requirements: application oriented sales support, service agreements, value priced repair alternatives, original parts management, preventative service measures, as well as remote diagnosis for troubleshooting and correction.



Training and continuing education

We continually offer technical courses for our service technicians in modern training centres at our production plants.

Highest quality service

Workshops with state-of-the-art equipment and customer-oriented service call planning guarantee fast supply of spare parts and provide the basis for high machine availability and cost effectiveness.

The latest measuring and diagnostic equipment

Liebherr customer service technicians have the finest equipment available. This guarantees rapid support on site.

Overview of telescopic handler

Fast and reliable working

- Powerful hydraulic system with 106 l/min / 23.3 Imp.gpm output
- Lifting and telescopic cylinder with end position damping
- Pressure release for hydraulic circuit-1 as an option

Optimum service access

- Motor installed transverse to direction of travel
- All maintenance points easily accessible

Sophisticated design

- New robust frame concept
- Optimised boom design and strong slide bearings
- Stable quick-release coupling





Ergonomic and comfortable driver's seat

- Comfort cab with generous space and excellent visibility in all directions
- Up to 6 halogen working lights or LED as an option
- Hydraulically pre-controlled multifunction joystick incl. travel direction switch

Perfect driving performance

- Engine power up to 90 kW
- Emissions standard stage IIIB
- Hydrostatic infinitely variable travel drive
- Max. tyres 460/70 R24

Technical Data



Engine

Deutz Diesel engine	TCD 3.6 L4 Emissions regulations according 97/68/EG, 2004/26/EC stage IIIB and EPA/CARB Tier 4i
Output (ISO 3046)	74 kW/100 HP at 2,300 rpm
Max. torque	480 Nm at 1,600 rpm
Displacement	3.6 l/220 in ³
Design	Four-cylinder in-line engine, water-cooled, turbocharger, air-to-air aftercooler
Fuel injection	Electronic common-rail injection
Air filter	Dry air filter with safety cartridge
Cooling	Hydrostatically powered, thermostatically controlled fan
Operating voltage	12 V
Batteries	12 V/145 Ah
Lighting dynamo	14 V/95 A
Starter	3.2 kW/4 HP



Travel Drive

Design	Stepless hydrostatic travel drive with swashplate variable displacement pump and Liebherr hydro motor in a closed circuit, forward and reverse travel achieved by changing the flowdirection of the variable displacement pump
Filtering Control	Pressure filter for closed circuit Via electronic accelerator and combined brake-inch pedal, constant adjustment of tractive force at maximum diesel engine speed. Changes of direction can be selected using multifunction joystick
Travel speed	Stepless variable 0 – 25 km/h/ 15.5 mph 0 – 20 km/h/ 12.4 mph (optional)



Noise Emission

Operator sound exposure (ISO 6396:1992)	$L_{pA} = 80$ dB(A) (Emission at the operator's position)
Exterior sound pressure (2000/14/EG)	$L_{WA} = 106$ dB(A) (Emission in the environment)



Brakes

Service brake	Deceleration effective on all four wheels by hydrostatic travel drive, hydrostatically operated wet multiple-disc brakes in the front axle (internal)
Emergency brake	Internal hydraulic spring-loaded brakes



Operator's Cab

Cab	Flexible mounting, separate driver's doors with lockable upper part, integrated ROPS/FOPS structure, tinted safety glass for the single front and roof panel, windscreen wiper and washing system for front and rear windscreen, steering column inclination adjustable using foot pedal
Driver's seat	Cushioned driver's seat, adjustable, with safety belt. Adjustable to suit weight of the driver
Ventilation	3-speed fan with fresh-air intake and filtering, 5 adjustable air nozzles, 2 air outlets on front windscreen, hinged rear window, side window lockable when open
Heating	Warm-water heating



Tyres

Standard tyre equipment	405/70-24
Design	Tubeless tyres on one-piece rims
Special tyre equipment	As specified by manufacturer



Steering

Design	Hydraulic steering of front and rear axles
Types of steering	Front-wheel steering (for road travel), four-wheel steering, crab steering (diagonal steering), LED display of neutral position, manually switchable

Technical Data

Axles

Drive	All-wheel drive
Front axles	Steering knuckle control, rigid mounting
Rear axles	Steering knuckle control, fitted to swing with a 11° oscillation
Differential	Automatic 45 % limited-slip differential in the front axle
Transmission	Planetary gear in the wheel hubs

Service Capacities

Fuel tank	120 l / 26.4 Imp.gal
Cooling system	19 l / 4.2 Imp.gal
Engine oil (incl. filter change)	8.5 l / 1.9 Imp.gal
Hydraulic tank	96 l / 21.1 Imp.gal
Total hydraulics	130 l / 28.6 Imp.gal
Differential gears front	4.8 l / 1.1 Imp.gal
Differential gears rear	6.8 l / 1.5 Imp.gal
Front axle hub, each	0.7 l / 0.2 Imp.gal
Rear axle hub, each	0.7 l / 0.2 Imp.gal

Performance Data

	TL 432-7	TL 436-7	TL 441-7
Operating weight			
with standard forks, without operator	7,060 kg 15,565 lb	6,880 kg 15,168 lb	7,250 kg 15,983 lb
Max. lift capacity	3,200 kg 7,055 lb	3,600 kg 7,937 lb	4,100 kg 9,039 lb
Max. lift height	6,925 mm 22'9" ft in	6,925 mm 22'9" ft in	6,925 mm 22'9" ft in
Max. forward reach	4,100 mm 13'5" ft in	3,980 mm 13'1" ft in	3,980 mm 13'1" ft in

Implement Hydraulics

Hydraulic system	Fixed displacement pump
Max. flow rate	106 l/min. / 23.3 Imp.gpm
Max. operating pressure	240 bar ¹⁾ / 3,480 psi ¹⁾ or 270 bar ²⁾ / 3,915 psi ²⁾
Filtering	Return oil filter and intake filter
Control	Single joystick control via multifunction joystick
Controlled functions	Lift, lower, tipping inwards, tipping outwards, retract, extend, close, open, forwards, backwards
Relief valves	Load-control valves on lifting, tilt and telescopic cylinders
End position damping	Lift, lower, tipping inwards
Max. flow rate implement hydraulics-1	106 l/min. / 23.3 Imp.gpm
Max. operating pressure implement hydraulics-1	240 bar ¹⁾ / 3,480 psi ¹⁾ or 270 bar ²⁾ / 3,915 psi ²⁾

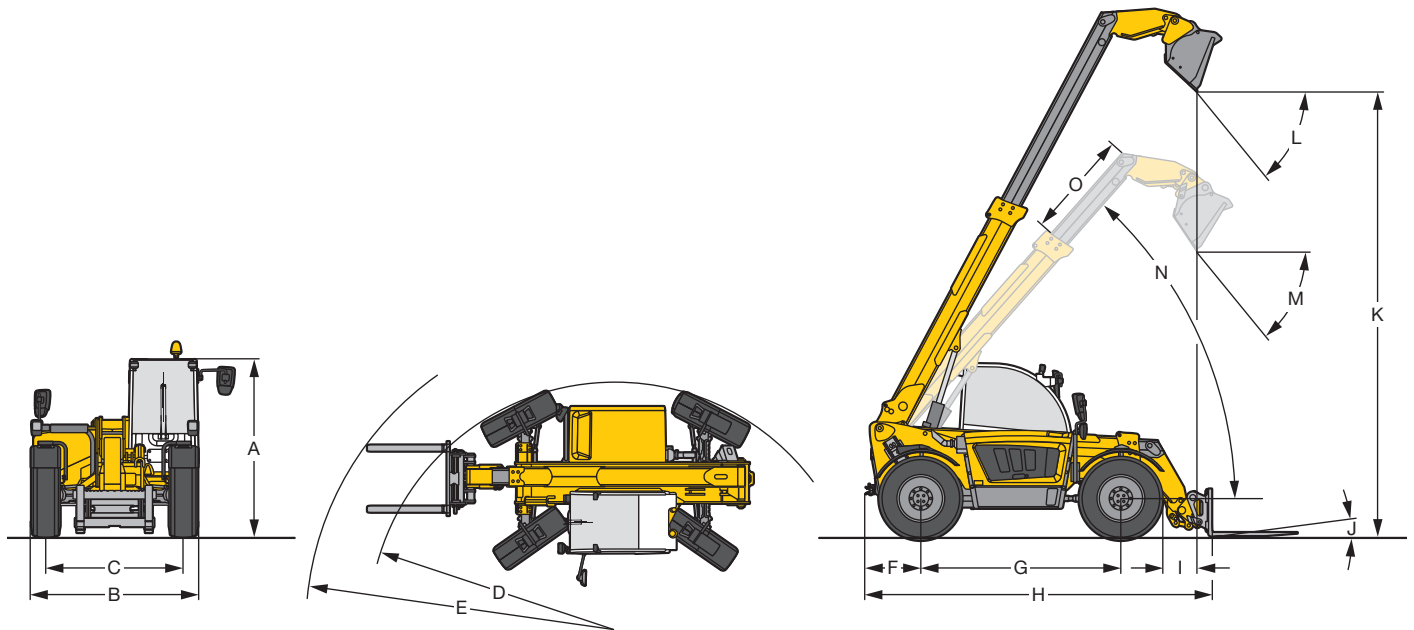
¹⁾ = TL 432-7

²⁾ = TL 436-7, TL 441-7

Cycle Times (without load, without end position damping)

	TL 432-7	TL 436-7	TL 441-7
Raising boom	6.8 s	6.8 s	7.0 s
Lift	5.0 s	5.0 s	6.2 s
Extend	6.4 s	6.4 s	7.1 s
Retract	4.0 s	4.0 s	5.0 s
Tipping inwards, full angle	2.9 s	2.9 s	3.5 s
Tipping outwards, full angle	2.3 s	2.3 s	2.8 s

Dimensions



Dimensions*

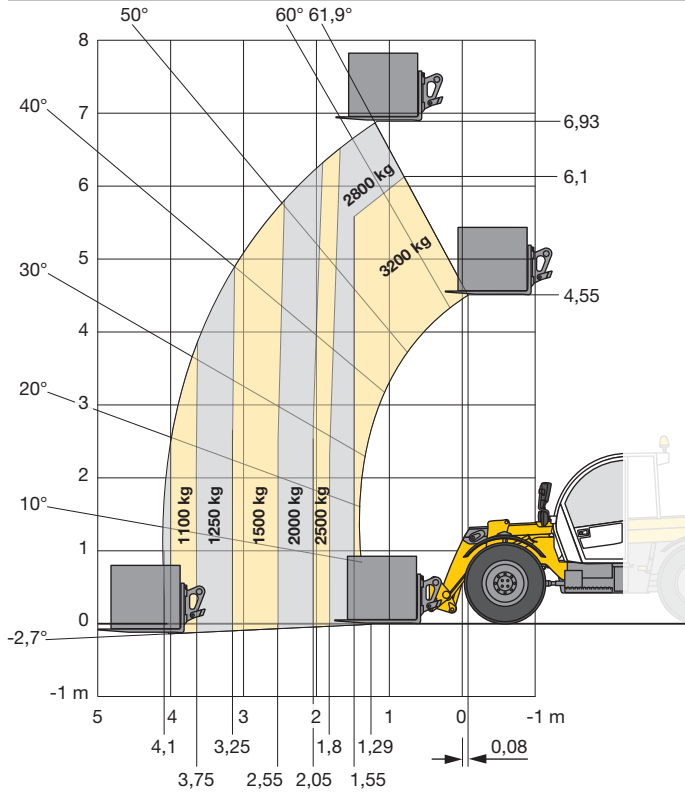
		TL 432-7	TL 436-7	TL 441-7
A Overall height	mm ft in	2,440 8'0"	2,440 8'0"	2,440 8'0"
B Overall width over standard tyres	mm ft in	2,340 7'8"	2,340 7'8"	2,340 7'8"
C Track gauge	mm ft in	1,920 6'4"	1,920 6'4"	1,920 6'4"
D Outside turning radius over tyres	mm ft in	3,750 12'4"	3,850 12'8"	3,850 12'8"
E Outside turning radius over forks	mm ft in	4,810 15'9"	4,850 15'11"	4,850 15'11"
F Rear overhang	mm ft in	710 2'4"	710 2'4"	710 2'4"
G Wheel base	mm ft in	2,700 8'10"	2,800 9'2"	2,800 9'2"
H Overall length to front carriage	mm ft in	4,782 15'8"	4,782 15'8"	4,782 15'8"
I Reach at max. lifting height with extended telescope and max. tip out angle	mm ft in	960 3'2"	860 2'10"	480 1'7"
J Max. tip out angle, lower pallet fork		13,5°	13,5°	13°
K Dumping height at max. lifting angle of 61.9° with extended telescope and max. tip out angle	mm ft in	6,460 21'2"	6,460 21'2"	6,245 20'6"
L Max. tip out angle, standard bucket at max. lifting angle		19°	19°	43°
M Max. tip out angle, standard bucket at 48° lifting angle		33°	33°	56°
N Lifting angle for 4,000 mm / 13'1" ft in dumping height		48°	48°	49°
O Extension length for 4,000 mm / 13'1" ft in dumping height	mm ft in	1,140 3'9"	1,140 3'9"	1,238 4'1"
Clearance height (middle of vehicle)	mm ft in	410 1'4"	410 1'4"	410 1'4"
Total rotation angle, machine mounting		126°	126°	150°

* All specifications with standard tyres, standard fork or standard bucket (0.9 m³/1.18 yd³).

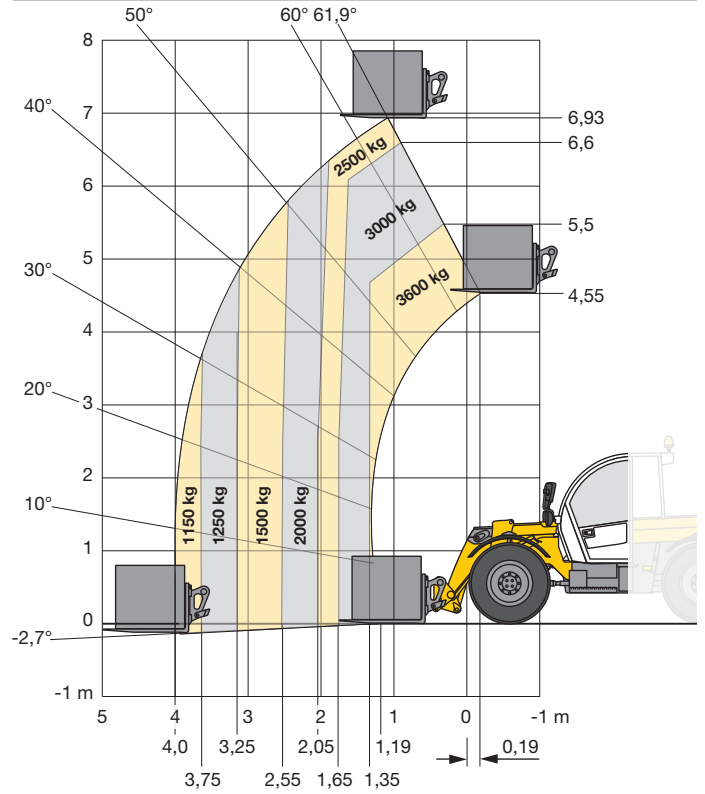
Load Charts (acc. to EN 1459, appendix B)

All specifications with load centre 500 mm / 1'8" ft in, standard tyres and standard fork

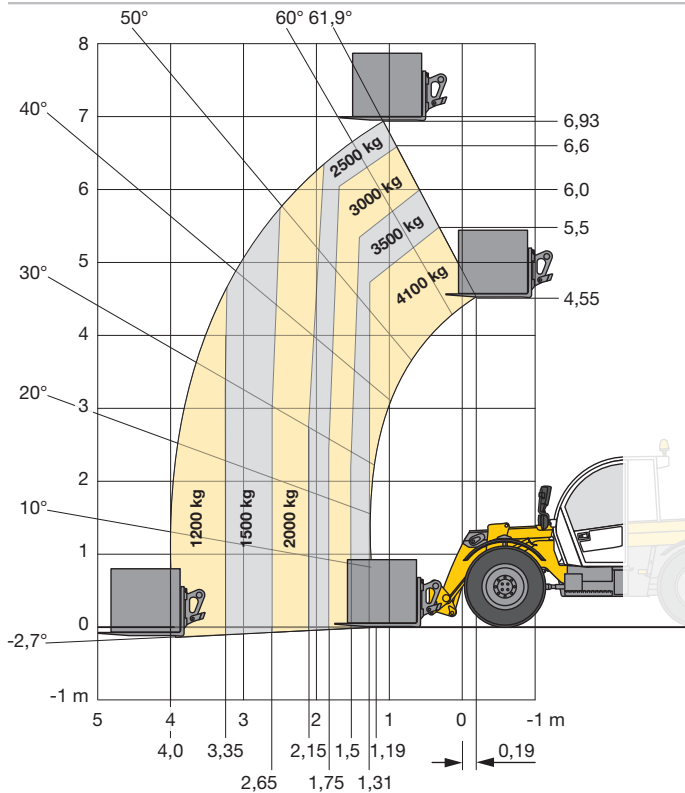
TL 432-7



TL 436-7



TL 441-7



Equipment

Basic Machine

3 steering modes manually switchable	•
45 % limited-slip differential in front axle	•
Automatic parking brake	•
Combined inch-brake pedal	•
Fuel and hydraulic tank made of steel	•
Main frame with solid design	•
Rear axle with 11° oscillation angle	•
Rigid front axle	•
Telescopic boom, 2 parts	•
Telescopic boom mounted low on frame	•
Automatic central lubrication system	+
Central lubrication strip	+
Lubrication aid/steering knuckle	+
Road-use registration	+
Special paint	+
Towing hitch	+

Implement Hydraulics

Fixed displacement pump, flow rate 106 l/min./23.3 Imp.gpm	•
Hydraulic circuit-1 at telescopic head	•
Hydraulic system can be deactivated (for road travel)	•
P-kinematics (tipping angle 150°)	(2) •
S-kinematics (tipping angle 126.4°)	(1) •
Constant flow rate for hydraulic system-1	+
Dirt deflector on telescope	+
Hydraulic circuit-2 at telescopic head	+
Leakage oil line	+
Long-term lubrication	+
Pressure release for hydraulic circuit-1	+
Tipping cylinder block	+

Travel Drive

25 km/h/15.5 mph/74 kW – 100 HP/41 kN/9,217 lbf tractive force	•
Diesel engine Deutz TCD 3.6 L4	•
Emissions Level IIIB/Tier 4i	•
Four-wheel drive, permanent	•
Hydrostatic fan drive	•
Hydrostatic travel drive, stepless	•
Speed warning	•
20 km/h/12.4 mph/74 kW – 100 HP/41 kN/9,217 lbf tractive force	+
20 km/h/12.4 mph/90 kW – 121 HP/52 kN/11,690 lbf tractive force	+
25 km/h/15.5 mph/90 kW – 121 HP/52 kN/11,690 lbf tractive force	+
Air pre-filter, Top Air	+
Hand throttle for constant engine speed	+
Maximum travel speed pre-selectable	+
Reversible fan	+

Operator's Cab

12 V power socket	•
Bottle holder	•
Coat hook	•
Driver's door with hinged window	•
Front windscreen wiper and washing system	•
Hinged rear window	•
Hinged wing mirror	•
Horn	•
Interior light	•
Intermittent windscreen-wiper system front	•
Mat	•
Mechanically cushioned driver's seat	•
Multifunction joystick	•
Radio pre-installation	•
Rear windscreen wiper and washing system	•
Seat belt	•
Steering column inclination adjustable using foot pedal	•
Storage compartment below the seat	•
Storage net or pocket behind seat	•
Tinted safety glass	•
Travel-direction control switch integrated into joystick	•
Warm-water heating	•
Air conditioning	+
Interior mirror	+
Premium air-suspended seat incl. seat heating and back rest extension	+
Radio with MP3 player incl. 2 speakers	+
Roll-down sun visor	+
Steering column height adjustable	+
Windscreen wiper arm extension for roof panel	+
Working lights front (Halogen or LED)	+
Working lights on boom (Halogen or LED)	+
Working lights rear (Halogen or LED)	+

Instruments

Driving direction	•
Fuel gauge	•
Full beam	•
Hour meter	•
Inclination indication	•
LED-overload warning system	•
Preheat system – diesel engine	•
Travel speed	•

• = Standard, + = Optional, (1) = TL 432-7 and TL 436-7, (2) = TL 441-7

Equipment



Safety

Emergency exit via the rear window	•
Emergency stop button	•
FOPS grille on cab roof interior	•
Hazard warning lights	•
Lift, lower and retract with end position damping	•
Overload warning system with acoustic and visual signal in compliance with EN 15000	•
Overload warning system with separate stack and bucket mode, can also be overridden manually	•
ROPS-cab	•
Telescope boom speed reduced before shutdown by overload warning system	•
Back-up alarm acoustic	+
Fire extinguisher	+
First aid kit	+
Front windscreen protective grille	+
Lifting cylinder support (for maintenance work)	+
Rotating beacon yellow, hinged	+
Top windscreen protective grille	+
Warning triangle	+
Wheel chock (x1)	+



Control and Warning Lights

Air filter contamination	•
Battery charging	•
Diesel engine failure	•
Emergency service	•
Engine coolant temperature	•
Engine-oil pressure	•
Hydraulic filter contamination indication	•
Hydraulic oil temperature	•
Indicator system	•
Overload warning system	•
Parking brake	•
Seat contact switch on/off	•
Speed warning threshold	•
Water in fuel	•



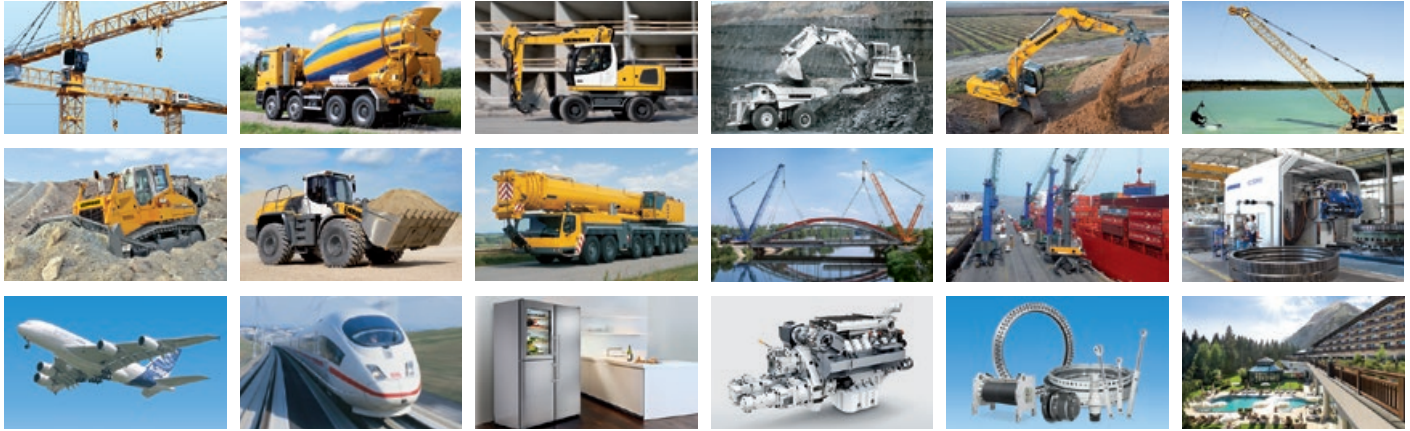
Attachments

Quick-release coupling, mechanical	•
Bucket with cutting edge	+
Carriage with fix forks	+
Crane hooks mountable on forks	+
Fork carrier with floating forks incl. load backrest guard	+
Lattice boom	+
Light-material bucket	+
Quick-release coupling, hydraulic	+

• = Standard, + = Optional, (1) = TL 432-7 and TL 436-7, (2) = TL 441-7

Options and/or special attachments, supplied by vendors other than Liebherr, are only to be installed with the knowledge and approval of Liebherr in order to retain warranty.

The Liebherr Group of Companies



Wide Product Range

The Liebherr Group is one of the largest construction equipment manufacturers in the world. Liebherr's high-value products and services enjoy a high reputation in many other fields. The wide range includes domestic appliances, aerospace and transportation systems, machine tools and maritime cranes.

Exceptional Customer Benefit

Every product line provides a complete range of models in many different versions. With both their technical excellence and acknowledged quality, Liebherr products offer a maximum of customer benefits in practical application.

State-of-the-art Technology

To provide consistent, top quality products, Liebherr attaches great importance to each product area, its components and core technologies. Important modules and components are developed and manufactured in-house, for instance the entire drive and control technology for construction equipment.

Worldwide and Independent

Hans Liebherr founded the Liebherr family company in 1949. Since that time, the enterprise has steadily grown to a group of more than 130 companies with over 39,000 employees located on all continents. The corporate headquarters of the Group is Liebherr-International AG in Bulle, Switzerland. The Liebherr family is the sole owner of the company.

www.liebherr.com

Liebherr-Werk Telfs GmbH

Hans Liebherr-Straße 35, A-6410 Telfs
☎ +43 50809 6-100, Fax +43 50809 6-7772
www.liebherr.com, E-Mail: lwt.marketing@liebherr.com
www.facebook.com/LiebherrConstruction